

# SIGNALAMP

Article-No.: 02-048

## Signal sign lighting

with LED

## Add-on

## clamp attachment

can be mounted on any existing sign

## Day / night

## automatic

efficient lighting only  
at night



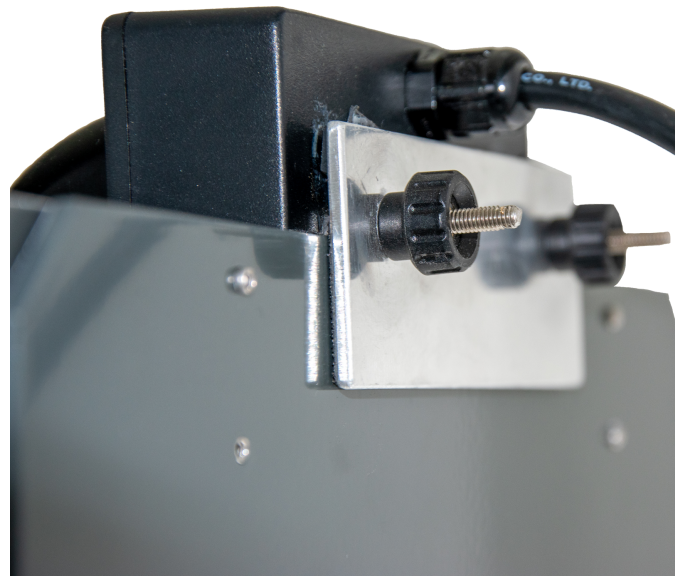
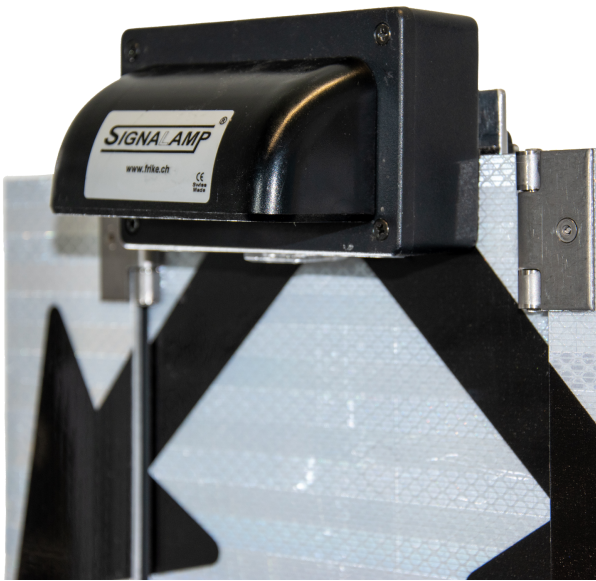
## Technical Data

Dimension (LxWxH):	115mm x 100mm x 65mm
Weight without battery:	0.37kg
Weight with battery:	2.63kg
Light source:	LED
Luminous intensity:	16cd
Twilight switch:	yes
Light color:	white
Power supply type:	battery / accu
Operating voltage:	12VDC
Current consumption day:	60µA
Current consumption night:	44.9mA
Cable length:	1.3m
Cable number of poles:	2pin
Connector type:	IEC 60320 C17
Operating time:	1100h (92d)

Assembly:

clampable with non-slip coating





## Characteristics

- Designed as a retrofit set with non-slip clamp attachment
- Lamp with connection cable and magnetic holder
- Battery holder with quick release mechanism
- Tool-free assembly
- Adapter box for rechargeable batteries or standard block batteries

## Accessories



### Block battery 6V/120Ah

Article-No.: 05-H23120P



### Accu 6V/5Ah

Article-No.: 05-23112



### Battery / accu box

Article-No.: 05-H20918



Verkehrstechnik  
Technique du trafic  
Traffic Control Engineering



## Contact us

FRIKE electronic AG  
Signalstrasse 1, 8194 Hüntwangen  
Switzerland  
+41 44 869 23 44, [info@frike.ch](mailto:info@frike.ch)  
[www.frike.ch](http://www.frike.ch)

